

Studio associato Ferrari & Partners

Piazza Duca d'Aosta  
Milano

ferrari&partners@email.com

Comune di Milano

Città Metropolitana di Milano

Oggetto

Realizzazione di un muro di sostegno in cemento armato

Parte d'opera Strutture in c.a.

Committente Sig. Luigi Colombo

Tavola

1

Tavola Esecutiva

scala

1:50

Il Progettista

Ing. Giuseppe Ferrari

Il Direttore dei Lavori

Arch. Maria Rossi

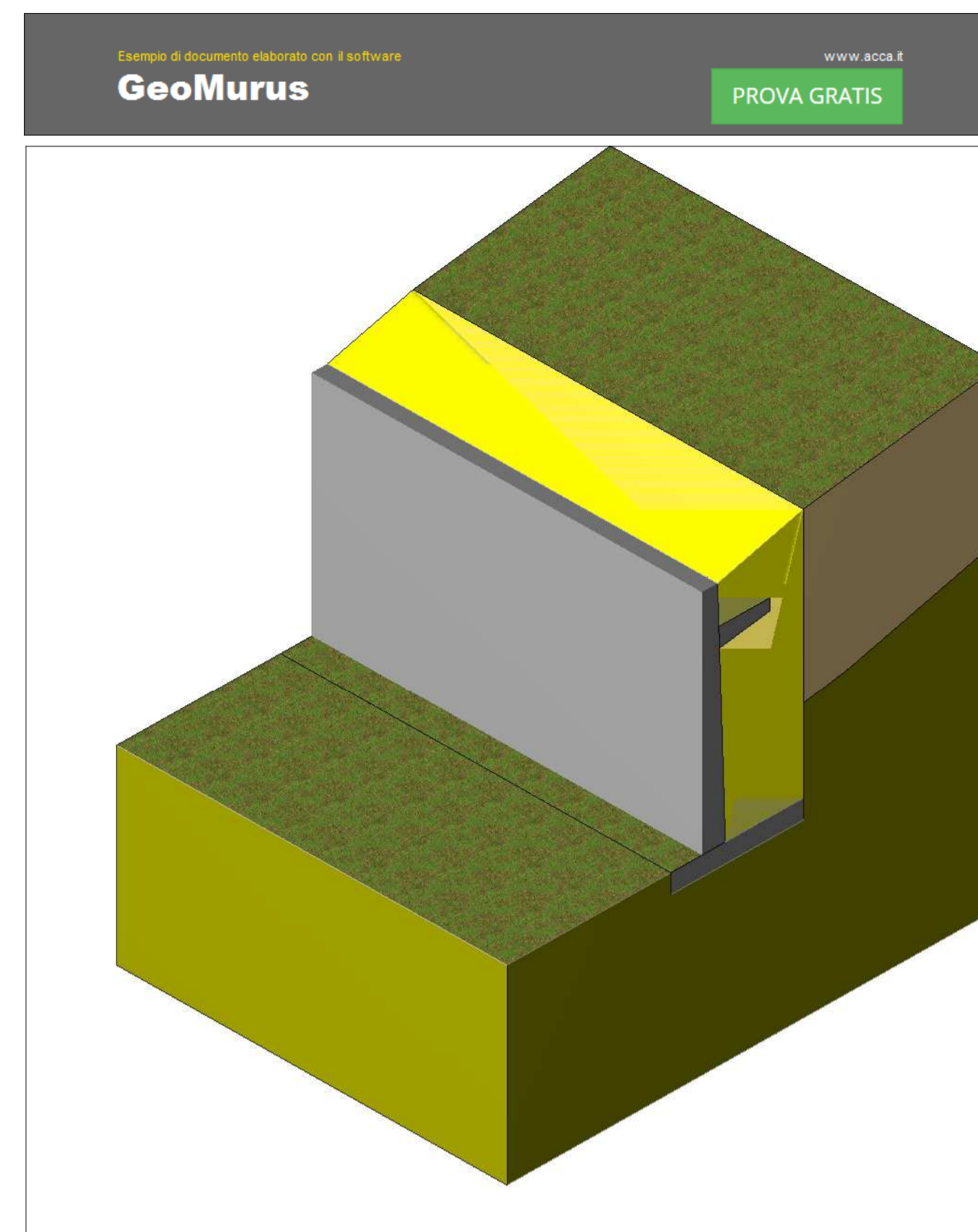
Data

Revisione

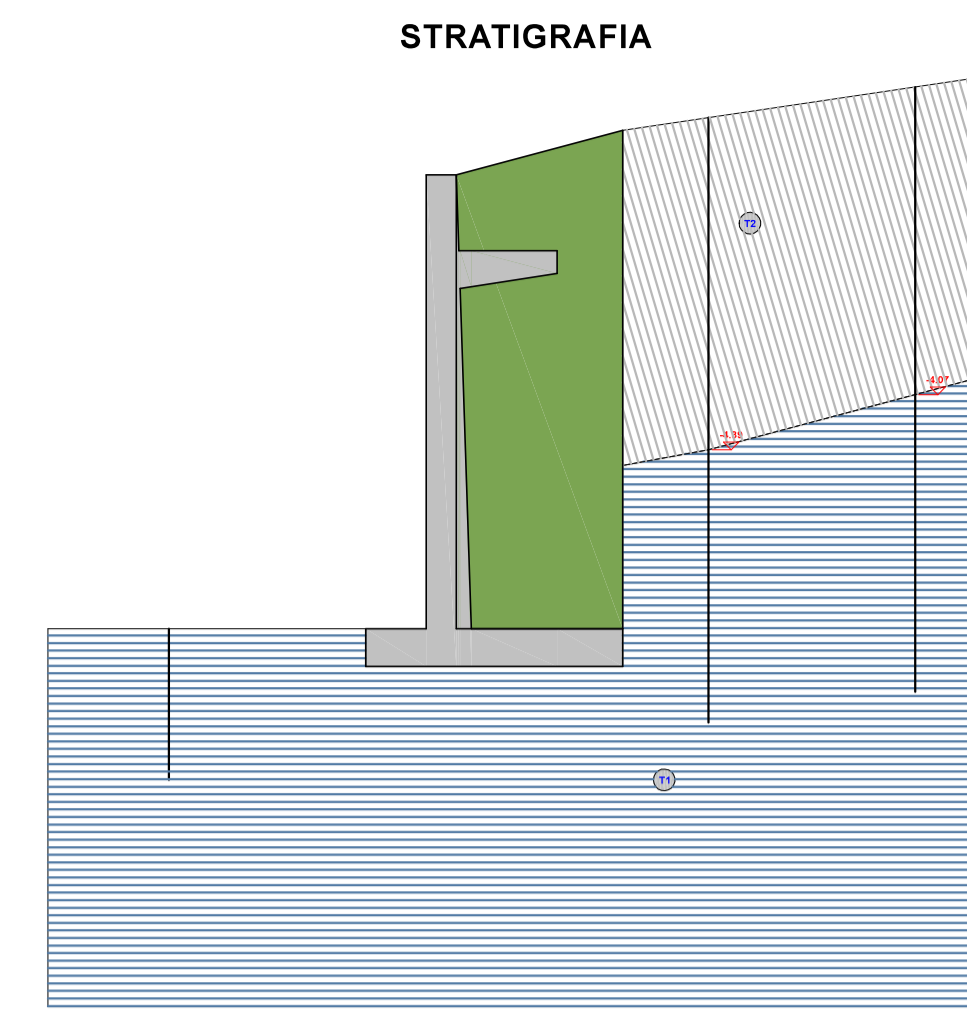
Tavola Esecutiva

Protocollo

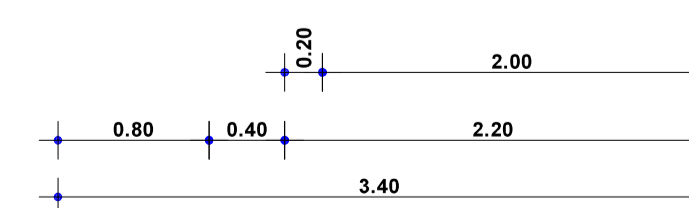
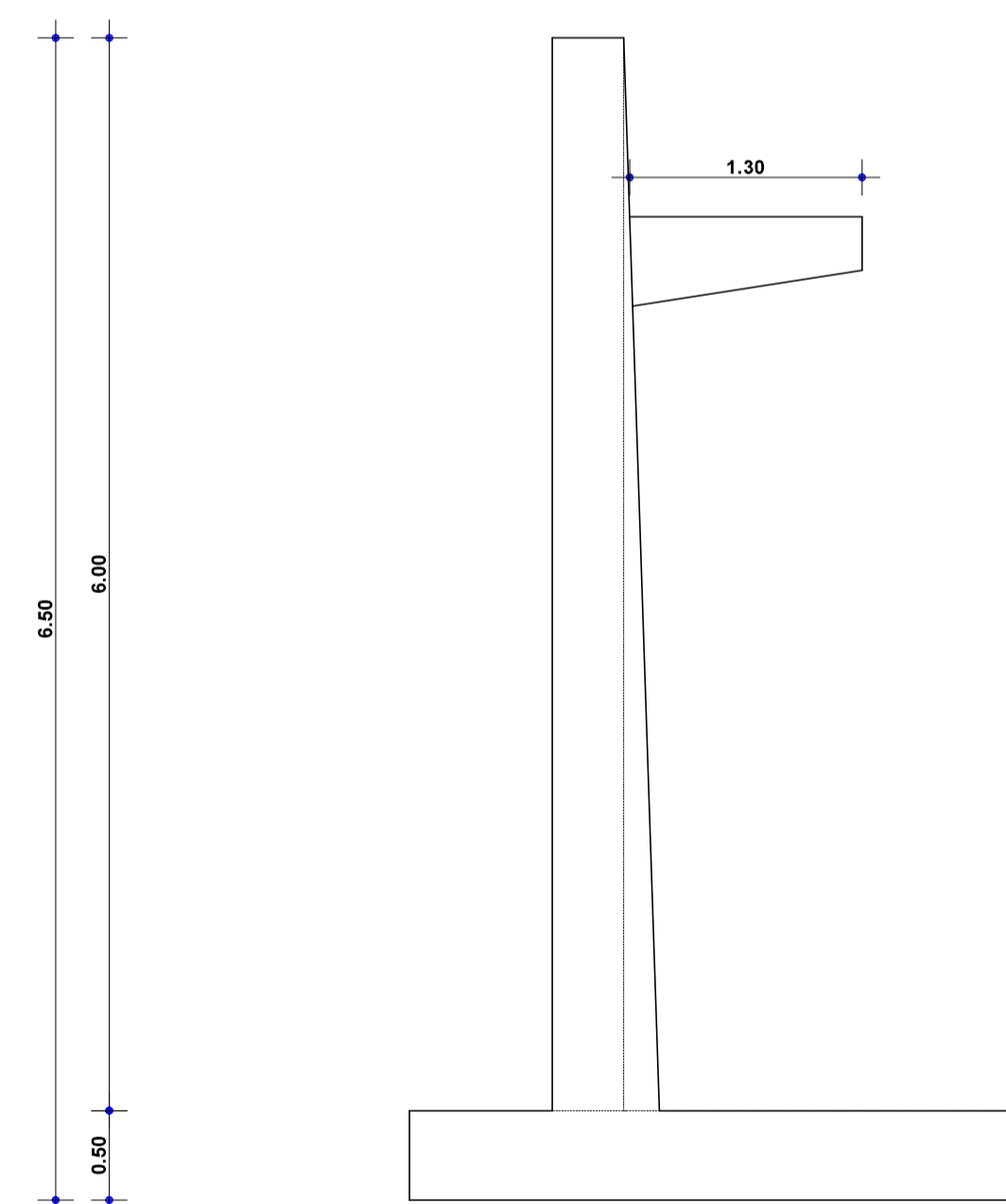
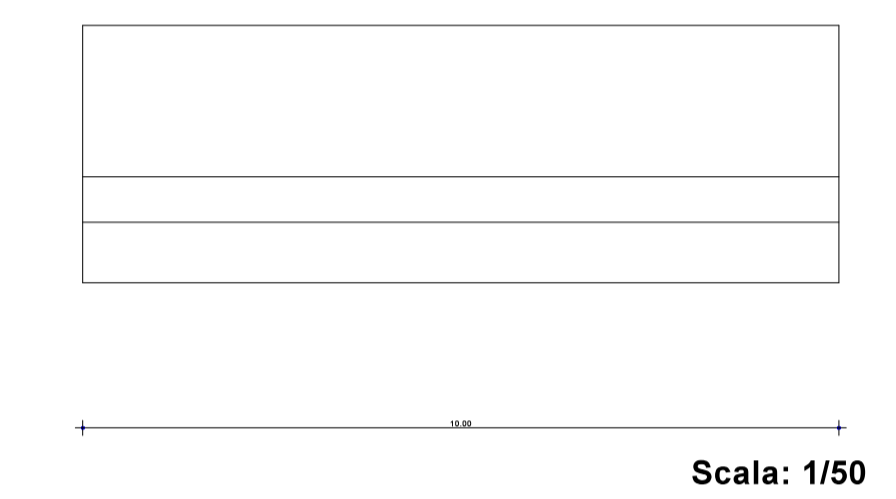
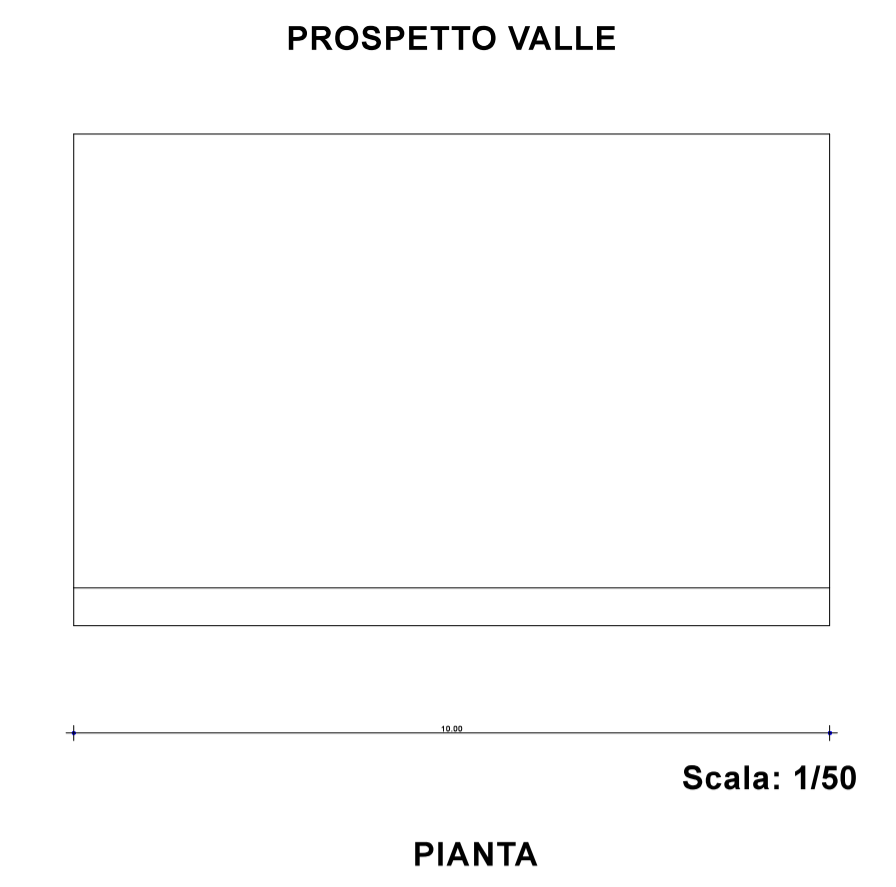
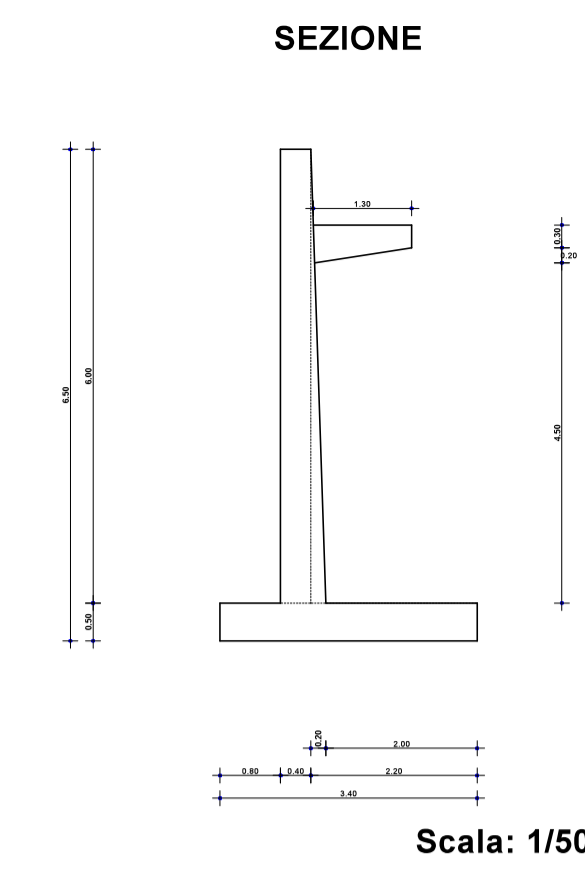
Il presente progetto è protetto a termini di legge.



## PARTICOLARI ARMATURE



Strato	Descrizione	g	h	f	Cu	C'
T1	Ghiaia asciutta	18000	18000	35.0°	0.00	0.00
T2	Ghiaia umida	20000	20000	35.0°	0.00	0.00



Scala: 1/20

